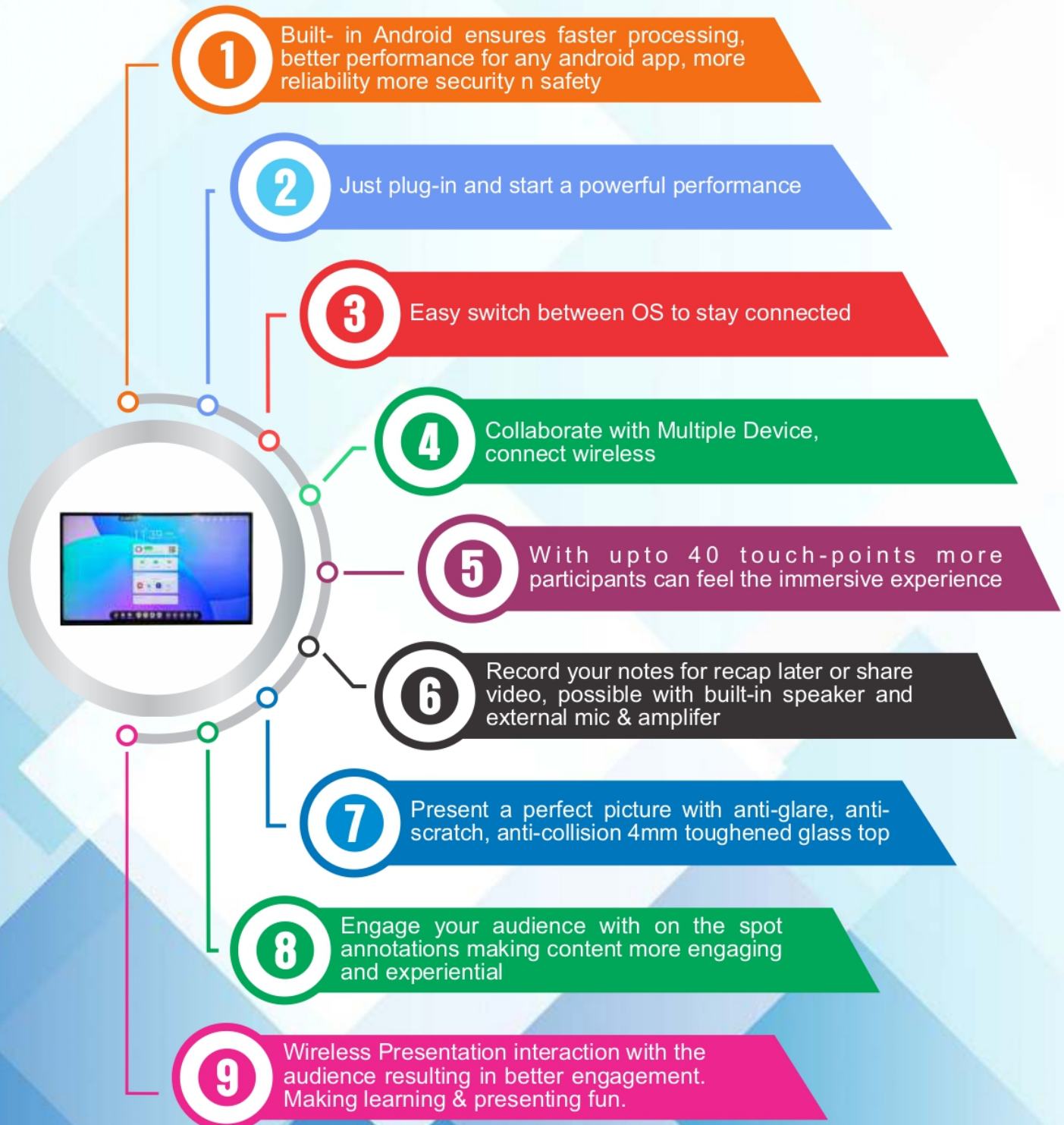


ALL IN ONE INTERACTIVE FLAT PANEL

GNN INTERACTIVE LED TOUCH DISPLAY – 4K (UHD)

GNN
Technologies

GNN INTERACTIVE LED TOUCH DISPLAYS are compatible with a wide range of educational software and allow user to easily collaborate, save and share ideas in meeting rooms and classrooms with an interactive and digital experience. It includes multi-tasking applications to various purposes, like white board software for teaching, web browser, screen sharing, recording or more.



Classrooms, Board Rooms, Training Rooms make way for an irresistible Clutter Free Replacement of the traditional white board-projector based rooms



OS
Android 13

DIAGONAL SIZE	65"	75"	86"	98"	110"
MODEL NAME	IFT65 Inch	IFT75 Inch	IFT86 Inch	IFT98 Inch	IFT 110 Inch



Features :

- 1 Bytello Classes:- . Cloud Base Teaching
2. Note:- Whiteboard app promotes collaboration during teaching /meeting. Note can be saved and share after teaching/meeting
3. WPS:- This app allow user to open all Microsoft Office Tools.
4. Screen share Function:- Mirrors your PC or laptop. You can also use a mobile device with this app which allow you to share documents or photos from device
5. Multiple-finger gesture recognition and control
6. Wirelessly Connect Your Mobile And Laptop
7. Easily Save Content From Panel To Your mobile Using QR Code Screen
8. Touch display with zero bonding technology

Model	IFP55S	IFP65S	IFP75S	IFP86S	IFP98S
Size	55"	65"	75"	86"	98"
Display/Open Cell	LG/BOE				
Backlight Type	D-LED				
Resolution	3840x2160				
Brightness	400cd/m ²	450cd/m ²	450cd/m ²	400cd/m ²	460cd/m ²
Contrast Ratio	5000:1				
Response Time	6ms	6ms	6ms	6ms	6ms
Pixel Pitch (mm)	0.420(H)x0.315(V)	0.496(H)x0.372(V)	0.429(H)x0.429(V)	0.4935(H)x0.4935(V)	0.5622(H)x0.5622(V)
Refreshing Frequency	60Hz	60Hz	60Hz	60Hz	120Hz
Viewing Angle	178°(H)/178°(V)				
Life Time	60,000 hrs	60,000 hrs	60,000 hrs	60,000 hrs	60,000hrs
Color Gamut (X% NTSC)	68%	68%	65%	65%	68%
View Area	1209.60(H)x680.40 (V)	1428.48(H)x803.52 (V)	1649.66(H)x927.94 (V)	1895.04(H)x1065.96 (V)	2158.848(H) x 1214.352(V)
Display Colors	1.07B(10bit)				
Product Size (W x D x H)	1304.0x93.5x814.8 (mm)	1512x89.15x927 (mm)	1741.7x103.4x1060.2 (mm)	1995.2x111.9x1206.3 (mm)	2244.9x108.2x1340.4 (mm)
Weight (kg)	36.5	41.5	57.5	79	137.5
Chipset	T982/31102				
CPU	Architecture:ARMA73+A53				
CPU	Working Frequency:1.5GHz				
CPU	Quad Core				
GPU	MaliG51				
RAM+ROM	4GB+32GB/8GB+128GB				
OS	Android 13.0				
Voltage	Optional 8 array Microphone				
Camera	Optional 48 MP				

Model	IFP55S	IFP65S	IFP75S	IFP86S	IFP98S
Audio Output	2x20W				
Interface	HDMI-Outx1, Type-CX1, HDMIX3, DP INx1, VGA INx1, AV INx1, YPBPR Inx1, OPS (Optional)x1, LANx1, USBX4				
Interface	Touch-USBx2, PC-Audio INx1, RS232Cx1, AV OUTx1, SPDIF OUTx1, Audio OUTx1				
Sensing Type	Infrared Touch Frame				
Surface Protection	4mm Toughened Glass				
Infrared Touch	40 Points				
Interpolation Resolution	32768 x32768				
Touch Accuracy	±1mm				
Output Mode	HID Standard				
Theory Clicks	Unlimited				
Connect Type	USB2.0 Full Speed				
Power Requirements	AC 100 V ~ 240 V, 50/60 Hz				
Power Consumption without OPS	140W				
Power Consumption with OPS	200W				
Standby Condition	<0.5W				
OPS Power	DC 18V/5A				
Voltage	DC+5V±5%				
Windows 10/8/7, Android	Multiple Touch				
Housing Material	Aluminum/Metal plate				
Housing Color	Black				
VESA	4-M8 ScrewHole (400x400mm)	4-M8 ScrewHole (600x400mm)	4-M8 ScrewHole (600x400mm)	4-M8 ScrewHole (700x400mm)	4-M8 ScrewHole (800x600mm)
Accessories	Remote Controlx1, Touch Penx1, Power Cordx1, Wall Mountx1				
Environment	Operating temperature 0 ~ + 40°C				
	Operating humidity 20% ~ 80% RH Non-Condensing				

Open Pluggable Specification - OPS Module

Operating system	Windows 11 Pro
Memory	8GB 16 GB DDR
Storage SSD	512GB SSD/1TB SSD
CPU	Intel Core i5 i7 11th Gen
Graphics	Integrated
Network connectivity	Built in Wi-Fi 2.5G/5G & RJ 45
Bluetooth	5.2 dual mode
Updates	Automatic OTA

