

GNN

Multimedia Technologies Pvt. Ltd.

PRODUCT CATALOGUE

 www.gnntechnologies.in



About us

GNN Multimedia Technologies Private Limited is a distinguished manufacturer & assembler, developer, wholesaler, trader and service provider of smart classroom and visual collaborate solutions with a large portfolio of products range from interactive flat panel, interactive whiteboard, Digital Wall, Digital Standee, Digital Podium Projectors, impact on the way we communicate and learn. Our solution improves the way the world works, learns, entertains and communicates. Our team is committed to creating interactive solutions which affects people's lives in a positive way.



Mission – Our mission is to provide affordable technology to education institute, government and private training centers, with latest equipment, software and learning methodologies.

Values- Being down to earth we stand on solid ground to ensure every aspect of all that do is done well. We Endeavor to perfect our core business to become a respectable global leader.

Creating value – We believe in being innovative and applying our values in what we do. We believe in sustainable advantages to ensure long & short – term development.

Devoting Ourselves – We are passionate about creating an ideal workplace for realizing one's potential. We unite to achieve great things through unselfishness and serving other people.



Commitment to customer service–

We have strong internal process in place to deal with customer queries and non – conformances efficiently. Be it installation, training or after sales, we have a dedicated team of professionals to help you at every step. Our main goal is to deliver the highest level of customer service and smooth process for our clients.

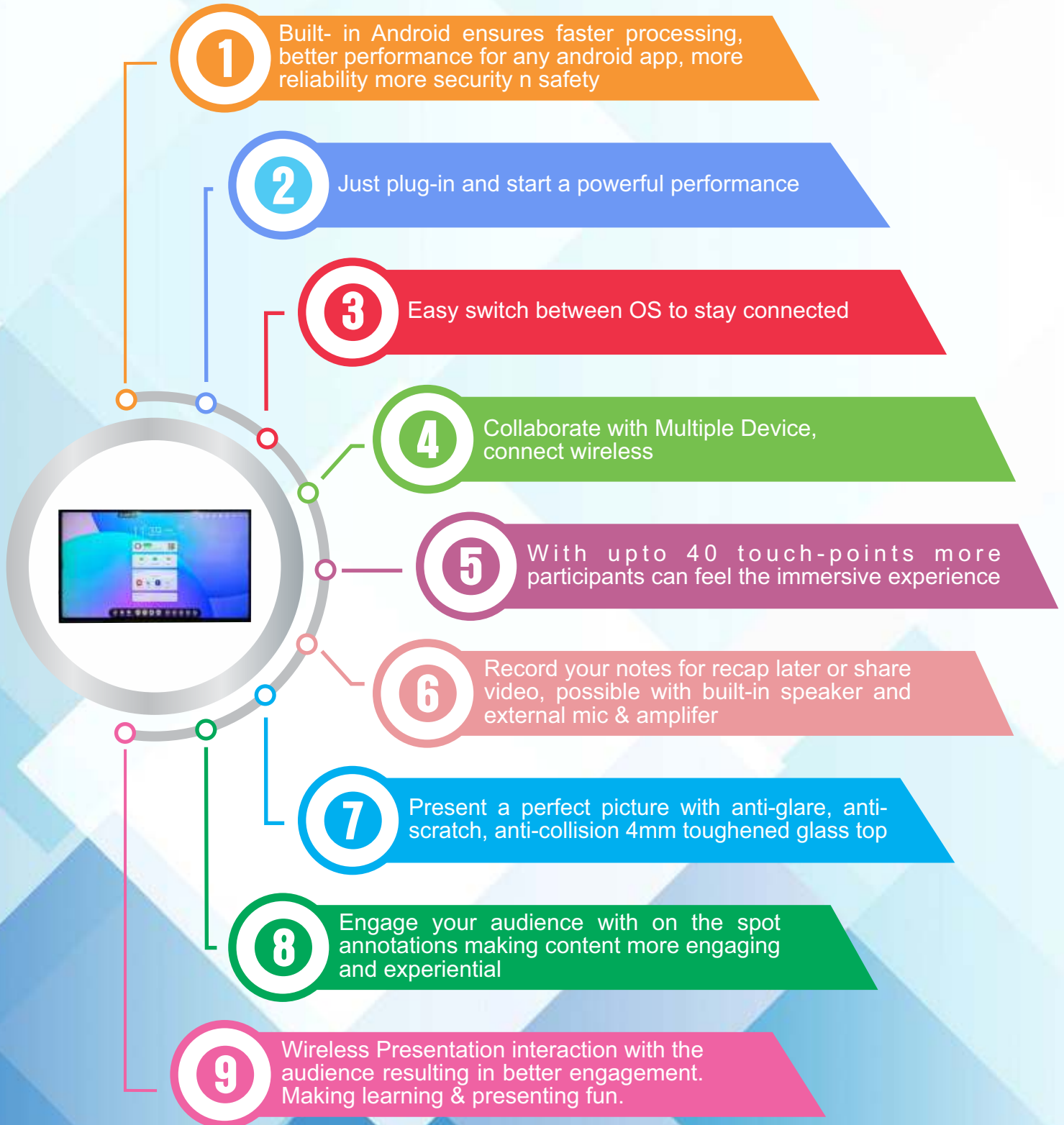
Social Responsibility & Environment –

At GNN Multimedia Technologies Private Limited, we understand the importance of our role to the environment. We use low energy technology at our facilities and believes in a paperless environment. Our products are environment friendly and help make human race more sustainable. GNN is socially responsible to the communities it serves, among the initiatives considered are the creation of local jobs in the manufacturing process, consumption of local products and services, and jobs to local professional to either install, maintain or train on products and services we offer, contributing to the local economy and society.

All in One Interactive Flat Panel

GNN Interactive LED Touch Display – 4K (UHD)

GNN INTERACTIVE LED TOUCH DISPLAYS are compatible with a wide range of educational software and allow user to easily collaborate, save and share ideas in meeting rooms and classrooms with an interactive and digital experience. It includes multi-tasking applications to various purposes, like white board software for teaching, web browser, screen sharing, recording or more.



Classrooms, Board Rooms, Training Rooms make way for an irresistible Clutter Free Replacement of the traditional white board-projector based rooms

OS
Android 11/13



- ❖ CVTE main board With original CVTE Housing
- ❖ CVTE Proprietary Wi-Fi module

DIAGONAL SIZE	65"	75"	86"	98"	110"
MODEL NAME	IFT65 Inch	IFT75 Inch	IFT86 Inch	IFT98 Inch	IFT 110 Inch



Features :

1. Bytello Classes:- . Cloud Base Teaching
2. Note:- Whiteboard app promotes collaboration during teaching /meeting. Note can be saved and share after teaching/meeting
3. WPS:- This app allow user to open all Microsoft Office Tools.
4. Screen share Function:- Mirrors your PC or laptop. You can also use a mobile device with this app which allow you to share documents or photos from device
5. Multiple-finger gesture recognition and control
6. Wirelessly Connect Your Mobile And Laptop
7. Easily Save Content From Panel To Your mobile Using QR Code Screen
8. Touch display with zero bonding technology

Model	IFP55S	IFP65S	IFP75S	IFP86S	IFP98S
Size	55"	65"	75"	86"	98"
Display/Open Cell	LG/BOE				
Backlight Type	D-LED				
Resolution	3840x2160				
Brightness	400cd/m ²	450cd/m ²	450cd/m ²	400cd/m ²	460cd/m ²
Contrast Ratio	5000:1				
Response Time	6ms	6ms	6ms	6ms	6ms
Pixel Pitch (mm)	0.420(H)x0.315(V)	0.496(H)x0.372(V)	0.429(H)x0.429(V)	0.4935(H)x0.4935(V)	0.5622(H)x0.5622(V)
Refreshing Frequency	60Hz	60Hz	60Hz	60Hz	120Hz
Viewing Angle	178°(H)/178°(V)				
Life Time	60,000 hrs	60,000 hrs	60,000 hrs	60,000 hrs	60,000hrs
Color Gamut (X% NTSC)	68%	68%	65%	65%	68%
View Area	1209.60(H)x680.40 (V)	1428.48(H)x803.52 (V)	1649.66(H)x927.94 (V)	1895.04(H)x1065.96 (V)	2158.848(H) x1214.352(V)
Display Colors	1.07B(10bit)				
Product Size (W x D x H)	1304.0x93.5x814.8 (mm)	1512x89.15x927 (mm)	1741.7x103.4x1060.2 (mm)	1995.2x111.9x1206.3 (mm)	2244.9x108.2x1340.4 (mm)
Weight (kg)	36.5	41.5	57.5	79	137.5
Chipset	T982/31102				
CPU	Architecture:ARMA73+A53				
CPU	Working Frequency:1.5GHz				
CPU	Quad Core				
GPU	MaliG51				
RAM+ROM	4GB+32GB/8GB+128GB				
OS	Android 11/13.0				
Voltage	Optional 8 array Microphone				
Camera	Optional 48 MP				

Model	IFP55S	IFP65S	IFP75S	IFP86S	IFP98S
Audio Output	2x20W				
Interface	HDMI-Outx1, Type-CX1, HDMIX3, DP INx1, VGA INx1, AV INx1, YPBPR Inx1, OPS (Optional)x1, LANx1, USBX4				
Interface	Touch-USBx2, PC-Audio INx1, RS232Cx1, AV OUTx1, SPDIF OUTx1, Audio OUTx1				
Sensing Type	Infrared Touch Frame				
Surface Protection	4mm Toughened Glass				
Infrared Touch	40 Points				
Interpolation Resolution	32768 x32768				
Touch Accuracy	±1mm				
Output Mode	HID Standard				
Theory Clicks	Unlimited				
Connect Type	USB2.0 Full Speed				
Power Requirements	AC 100 V ~ 240 V, 50/60 Hz				
Power Consumption without OPS	140W				
Power Consumption with OPS	200W				
Standby Condition	<0.5W				
OPS Power	DC 18V/5A				
Voltage	DC+5V±5%				
Windows 10/8/7, Android	Multiple Touch				
Housing Material	Aluminum/Metal plate				
Housing Color	Black				
VESA	4-M8 ScrewHole (400x400mm)	4-M8 Screw Hole (600x400mm)	4-M8 Screw Hole (600x400mm)	4-M8 Screw Hole (700x400mm)	4-M8 Screw Hole (800x600mm)
Accessories	Remote Controlx1, Touch Penx1, Power Cordx1, Wall Mountx1				
Environment	Operating temperature 0 ~ + 40°C				
	Operating humidity 20% ~ 80% RH Non-Condensing				

Open Pluggable Specification - OPS Module

Operating system	Windows 11 Pro
Memory	8GB 16 GB DDR
Storage SSD	512GB SSD/1TB SSD
CPU	Intel Core i5 i7 11th Gen
Graphics	Integrated
Network connectivity	Built in Wi-Fi 2.5G/5G & RJ 45
Bluetooth	5.2 dual mode
Updates	Automatic OTA



Interactive Touch White Board DIGITAL TEACHING DEVICE

Interactive whiteboard is a classroom tool that allows images from a computer screen to be displayed onto a classroom board using a digital projector. The teacher or a student can “interact” with the images directly on the screen using a tool or even a finger.

With the computer connected to the internet or a local network, teachers can access information around the world. They can do a quick search and find a lesson they used previously. Suddenly a wealth of resources is at the teacher’s fingertips.

For teachers and students, the interactive white board is a powerful benefit to the classroom. It opens up the students to collaboration and closer interaction to the lessons. Multimedia content can be shared and used in lectures, keeping students engaged.



Features :

Multi Touch

Multi users can write on the board, simultaneously by fingers and any pointing device

Accurate Positioning

9 point calibration for higher accuracy.

Soft Hotkey

20 hot key on both side for frequently used application, also available customization as well.

Scratch Proof Surface

Rugged ceramic steel surface

Innovative Technology

Infrared touch technology shows its excellent performance in anti-light interference. Low gloss avoids strain to eyes.

Low Maintenance

Highly integrated designs make it so easy to install and avoid strain to eyes.

Hardware Comprises

Interactive white Board

Multimedia All in one PC (With wireless air mouse)

Speaker and document Camera

Projector

Projector Mounting Stand

VGA/HDMI, Power Cables

Software

IW Board Software

With popular teaching tools including pen, spotlight, eraser, rulers, support screen record, multi document function, color filling etc.

Support screen record and playing back

Support screen record (Voice and text synchronization), support annotation and edit of files with Word, PPT format. Support any polygon drawing including lines, graphics, triangles, pentagons and can rub, cut, clone, copy and delete any selected objects.

Support unlimited writing range by moving the page freely.

Support Picture zoom in/out, rotation by finger gesture.

Provide free online software upgrade.

Digital Learning Content

Multimedia learning content
(CBSE/NCERT/State Interactive Board)

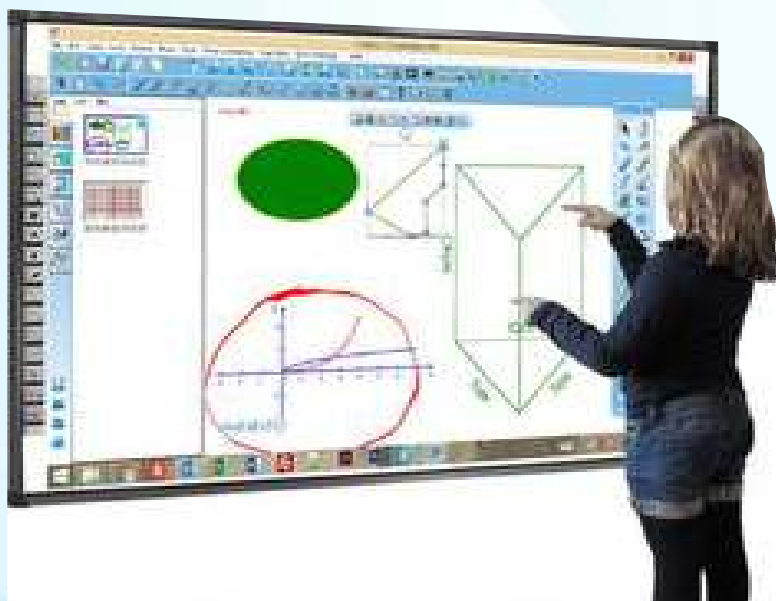
School Content

- > Easy user interface
- > Animation 2D/3D content
- > Offline Content.
- > Activities–Match the following, True/ False
- > Puzzles, Games, Worksheets.
- > Interactive learning.



CERAMIC/NON CERAMIC INTERACTIVE BOARD

Interactive whiteboards are tools used commonly in education that link a computer to a projector and a touch-sensitive screen. This allows the user to become a human input device and control the computer functions via the touch screen, while projecting the computer images on a large surface. It is ideal for education settings.



Model	GNN-82" Ceramic
Brand	GNN Multimedia Technologies Private Limited
Size/Dimension	82" Diagonal
Technology	Infrared Sensor Technology
Writing Method	Pen, fingers or any pointing objects
Calibration	2 points/ 4 points / 9 points
Input Type	Finger Touch
Multi - touch	10 touch points
Aspect Ratio	4 : 3
Effective Touch Area	1680 mm X 1185 mm
Surface Material	White Ceramic Steel, Anti Scratch , Anti-glare
Operating System	Window 7/8/10 , Linux, Android.
Interactive Software	White Board V4.0
Response Speed	<8ms
Power Consumption	100-240 W

ALL IN ONE DIGITAL CABINET

Easy to Install and Use

- ❖ No challenge for installation
- ❖ One button switch on/off mechanism
- ❖ Multi Slots for USB, USB-B, HDMI, VGA, LAN, AUDIO IN

Built-in HD Visualizer

- ❖ Scan any documents and 3D objects up to A4 size



HD Audio & Video Broadcasting Integrated

- ❖ Improvement of campus facilities with broadcasting functionality
- ❖ Operating process of the broadcasting system simplified

2.4G RF wireless Remote Control

- ❖ Rechargeable Battery. 3000 hrs standby time
- ❖ Built-in control & PC control keys.

Highly-integrated System

- ❖ PC amplifier, central control unit speakers, visualizer, keyboard & mouse, broadcasting module, wireless microphone, WIFI router, switch etc

Features :

All in One, Built in CPU, Built in key board

Professional application software,

A smart key to freely switch the built-in speaker and external speaker

50mm ultra –thin design, available to embed into the push & pull chalkboard

Document Camera support audio and video simultaneous recording

HDMI central control function, HD multimedia devices, HDMI signal switching are available

Hidden button design, buttons are hidden when not in use

Dual USB input.

One – touch ON system & lockable

Available in Black Color.

Control Model	Built in dust proof panel, IT remote (any remote), Software
Input Voltage	200 -240, 50H/60Hz
Standby power	< 5W
WXDXH	1230X310X95 mm
USB 2.0	2
On – off Key	One click on this button will turn on /off PC

PC Configuration

i3/i5/i7 ,6 th ,7 th ,10 th ,11 th Generation
8GB RAM upgradable
512 GB SSD upgradable

PC CABINET



Features :

- Lockable
- Housing for PC, UPS, Keyboard & Mouse
- Fully ventilated for PC Heat
- Specifications:-
- 710X520X300MM
- Weight:- 10 Kg
- Multimedia Sound system

Projectors & Accessories

Projectors Technology

DLP

LCD

LED

Types

LONG -THROW

SHORT-THROW

ULTRA SHORT-THROW

Brands

acer

Benq

EPSON

HITACHI

ViewSonic*

Projection Screens

- ❖ Motorized Projection Screen
- ❖ Remote operated, motorized projection
- ❖ Tripod Projection Screen
- ❖ Fixed frame Projection Screen
- ❖ Matter finish projection Screen
- ❖ Retractable projection Screen

Accessories

- ❖ Ceiling mouse
- ❖ Wall Mount
- ❖ Ultra Short throw mount
- ❖ Projector cage
- ❖ Projector lift
- ❖ VGA & HDMI cables
- ❖ Audio+Power cables
- ❖ DVI cables



DOCUMENT CAMERA & DESKTOP VISUALIZER



Feature	Description
Type	Desktop
Total Pixels	5 Mega pixels
Zoom	12X Optical Zoom, 8X Digital Zoom
Frame Rate	30 FPS
Shooting Area	A4 Size, Landscape with in-built back light for showing transparencies, negatives, slides & X- Rays
Lamp Life	20000 hours
Focus	Auto and Manual
Resolution	1920 x 1080 Full HD
Signal Support	Resolutions 1024*768; 1280* 1024; up to1920x1080
White Balance	Auto/Manual White Balance
Multimedia Function	Functions: Color/Black-White, Mirror, Rotate, Brightness Control, Freeze, PIP, PBP, Preview
Input Ports	VGA-In x1, HDMI-In x1, Audio-In x1
Output Ports	VGA-OUT x1, HDMI-OUT x1, Audio-OUT x1
Other Ports/Connectivity	USB Port x1, SD Card Slot & RS232 Port
Accessories	Remote Control, connectivity cables
Inbuilt Memory	Min. 100-images

Features :

- 5MP CMOS sensor for HD Image
- 12X Optical Zoom, 8X Digital Zoom
- Quick response time of auto focus
- USB2.0 for fast image and video download to PC
- Wide range of peripherals input/output jacks
- Support operation system all WIN, LINUX
- HDMI port for easily connecting to a digital projector or other HD devices

DIGITAL PODIUM

TO DELIVERING AMAZING PRESENTATIONS

Digital Podium is an all in one multimedia presentation device. With its easy to use motorized tilt touch screen, it's never been more convenient to work through a presentation.

Integrated Devices

Built in Mic and Speaker, Laptop, Wireless Pointer, all connected in such a way that makes the use easy. Just plug – in to start the presentation.

MOTORIZED TILT TOUCH SCREEN

Amazing audio out-put, makes audio lessons enriching



INTEGRATED DEVICES

Built-in PC and audio system, connected in such a way that makes the use easy. Just plug-in to start the presentation



BUILT-IN AUDIO SYSTEM

The inbuilt PA system not only makes voice audible, but also ensures clarity throughout the presentation



DESIGNED WITH WHEELS

Rugged body design with caster wheels make it easy to move around



LAPTOP STYLE KEYBOARD MOUSE

Easy to use and no need to learn new tricks while presenting



LOCKABLE SLIDER AND CABINET

Ensure safety of your presentation notes and personal things





Seminar Room



Lecture Room

Type / Mounting	Free Standing
Construction	Wheel Mounting, All directional wheel with lock facility, Steel body with Wood and polycarbonate , vandal resistant
Display	
Monitor	Highly sensitive, Built-in Interactive Panel with power- driven motorized To tilt adjust
Technology	Touch
Size	22"
Resolution	1920X1080
Aspect Ratio	16:9
Interactive Resolution	170(H) ; 160(V)
Computer interface	USB X 1, VGA X 1 X 40 mi X L

Response Time	<8 ms
Viewing Angles	178 degree
Reading Accuracy	+ - 0.5 mm (center)
Console Panel Ports	RGB X 1 , USB , Rj45 LAN PORT, Display Switcher , Video Input
Interactive Software	Feature like pens, annotate, choose, draw, erase, color, shapes , sizes , Text , edit , fonts , stamp , move etc.
Built - In	
Devices	Gooseneck Mic X 2, Hand held Cordless mic X 1, Cordless Collar Mic X 1
Amplifier	Power : 60 Watts , Frequency Response : 100HZ – 15KHZ, AC Power : 220 V to 240V AC, Microphone Input x 3, VPC/Laptop Input X 2 , Audio Inputs X 4, Audio Outputs X 3
Speaker	Speaker X 2, RMS : 20 watt, Frequency Response 100 Hz to 15 KHZ, Sensitivity: + 30dB
Security	RFID authentication System for secure access to the system (Central Locking)
System Details (Optional)	
Chassis	Industrial grade aluminium chassis
Processor	Intel i3/i5/i7
Memory	4 GB
HDD/Storage	512 GB SSD
OS	Window 11 Professional
Minimum Range	15 Meters
Power Supply	100- 240V, 50Hz AC supply
Provision for Additional Devices	A dedicate space to house CPU/Laptop with security lock, sliding tray, space for visualizer, space for keyboard and mouse.

LECTURER RECORD CAMERA



Full HD recording with wide angle view, multiple video interface support

- Superb High-definition Image with 1/2.8inch high quality CMO Ssensor
- 1920x1080 resolution with 30fps frame rate

Auto Focus Technology with stable and accurate focusing

- Low Noise and High SNR
- Advanced 2D/3D noisereduction technology ensuring image sharpness

Wide-range, Quiet and Quick Pan, Tilt, Zoom Mechanism

- Supports all major video conferencing platforms like Zoom, Webex, Google Meetings, Skype etc.

INDOOR & OUTDOOR LED VIDEO WALL

GNN Multimedia offers that's optimal for your venue. With stunning clarity and a remarkable image quality. GNN Multimedia LEDs command attention in a paced environment, even in high ambient lighting.

Indoor LED Series*
Pixel Pitch: 3mm, 4mm, 6mm
Brightness : Up to 2500 nits
LED: 3 in 1 SMD
Alarm notification function



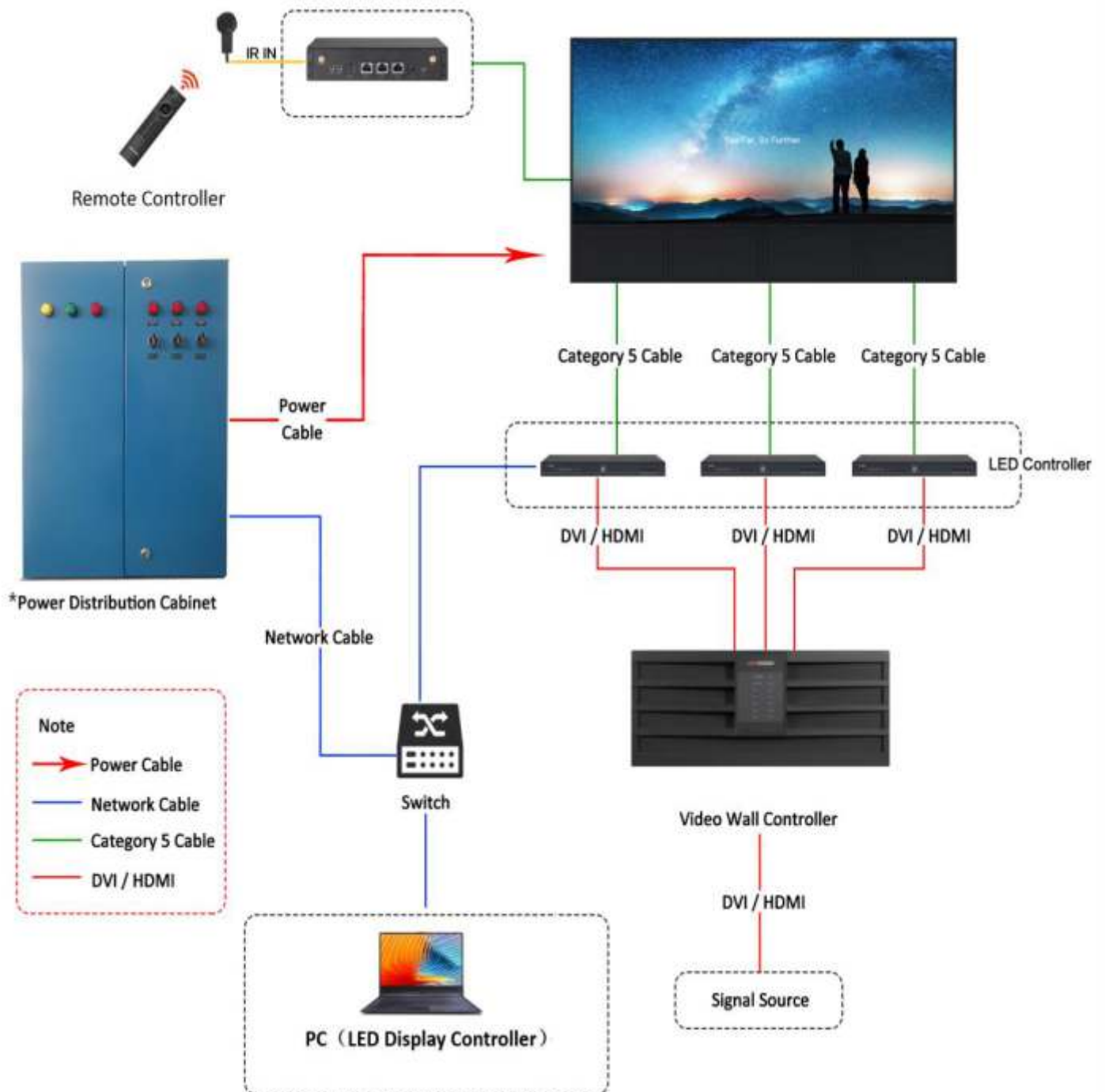
Fine Pitch/ Narrow Pitch LED Series*
Pixel Pitch: 1.2mm, 1.5mm, 1.9mm, 2.5mm
Brightness: Up to 1000 nits
R/G/B 3 in 1 SMD Pixel Configuration

Outdoor LED Series *
Pixel Pitch: 6mm, 8mm, 10mm and 16mm.
Brightness : Upto 7000 nits
Intelligent Uniformity Calibration
LED : 3-in-1 SMD
Front IP65/ Rear Ip54



LED Billboard
Pixel Pitch : 6mm, 8mm, 10mm
Brightness : Upto 7000 nits
LED : 3-in-1 SMD
Front IP65/ Rear Ip54

TYPICAL APPLICATION



KIOSKS

We are leading provider of touch screen , retail and information Kiosks in India, at very affordable price.

Information Kiosks have revolutionized the way information , advertisement and brands are presented to customer. These Kiosks can be used for indore as well as outdoor marketing when coupled with our great quality digital LED signage built in Kiosks

We also provide self-service Kiosks equipped with smart card reader, bar code scanner and thermal printer



PRODUCT RANGE

- ❖ Touch screen information / feedback kiosks
- ❖ Exhibition touch kiosks
- ❖ Visitor Management kiosks
- ❖ Shopping Mall Information touch kiosks
- ❖ Education kiosks
- ❖ Tourism information kiosks
- ❖ Digital Signage
- ❖ Hotel / Hospital kiosks
- ❖ Self-service kiosks





GET IN TOUCH



HEAD OFFICE

Plot no. 184, Sector-5, Nohar
Bhadra Road, Near Karni Mata
Temple, District- Hanumangarh,
Rajasthan-335523



EMAIL

navjot@gnntechnologies.in



PHONE

+91 7976584316



WEBSITE

www.gnntechnologies.in



STRATEGIC PARTNERSHIP & SUPPORT



FOR SALES ENQUIRIES

sales@gnntechnologies.in



FOR DISTRIBUTOR INQUIRIES AND STRATEGIC PARTNERSHIP

info@gnntechnologies.in



DISTRIBUTOR NETWORK

Branch office locations New Delhi,
Dehradun , Haldwani, Jalandhar,
Bathinda



CUSTOMER CARE

+91- 9887339166
technical@gnntechnologies.in

GNN

Multimedia Technologies Pvt. Ltd.